

August 2024

### Welcome to our virtual community noticeboard

Summer is here and there are lots of activities for your children and young people to take part in. There's also details on free days out and free or £1 meals for kids.

**Located in Lawley,  
Lightmoor Village & Overdale**

PRIORITY GIVEN TO RESIDENTS FROM THESE AREAS.

**BOOK NOW!!!**  
**DATE: SIX WEEKS HOLS 2024**

<https://www.eventbrite.com/cc/childrens-holidays-2024-lawleylightmooroverdale-3038149>

**CHILDREN'S  
HOLIDAY  
ACTIVITIES**

**YOUTH  
SPORTS  
SESSIONS**

Activities Include:

- Cooking
- Magic
- Exotic Zoo
- Fun Science
- Professor Black Activity Sessions
- Crafting
- Cricket & Multisports

Find all events by scanning the QR code or search Eventbrite



For Mini Athletics book here directly:  
[www.miniathletics.com](http://www.miniathletics.com)



**URBAN  
GAMES**

Search for details:  
[www.telford.gov.uk/info/20390/events\\_and\\_activities/6460/urban\\_games](http://www.telford.gov.uk/info/20390/events_and_activities/6460/urban_games)



**Others With Added Costs:**

- Crossbar Holiday Club at Lawley Primary School (Contact directly [admin@thecrossbargroup.co.uk](mailto:admin@thecrossbargroup.co.uk))
- Top Hats Stage School at Lightmoor School (Contact directly to book [midlands@tophatstageschool.co.uk](mailto:midlands@tophatstageschool.co.uk))

 For more info contact: [events@bvt.org.uk](mailto:events@bvt.org.uk) or [clerk@lawleyoverdale.org.uk](mailto:clerk@lawleyoverdale.org.uk)

From Lawley Partnership Board & Lightmoor Village Delivery Group

Includes a variety of activities from partners & with some funding from:



# Kids can eat free!

Detailed below are places you can take your young people to eat for £1 or for free.



## PLACES WHERE KIDS EAT FREE (OR FOR £1) DURING THE SUMMER HOLIDAYS 2024



[moneysavingcentral.co.uk/kids-eat-free](https://moneysavingcentral.co.uk/kids-eat-free)

### LAS IGUANAS

Join 'My Las Iguanas' via the App & Niños eat free with every adult main

### ASDA

Kids eat for £1 All Day, Every Day at Asda cafes, with no adult spend required.

### SAINSBURYS CAFES

Kids eat for £1 with the purchase of an adult hot main. From 11:30am every day.

### PAUSA CAFE @ DUNELM

Kids get 1 mini main, 2 snacks & a drink FREE with every £4 spend after 3pm

### THE REAL GREEK

Kids under 12 eat FREE every Sunday for every £10 spent by an adult

### TGI FRIDAYS

Kids Eat Free When 'Stripes Rewards Members' purchase an adult's main meal (App needed)

### PUREZZA

Children under the age of 10 get free pizza at Purezza with every adult meal purchased

### TRAVELODGE & PREMIER INN

Buy 1 Adult Breakfast from just £8.99 & up to two kids eat breakfast for free

### IKEA

Kids get a meal from 95p daily from 11am

### SIZZLING PUBS

Every Monday to Friday, 3 - 7pm, kids' mains are £1 with every adult meal.

### BEEFEATER & BREWERS FAYRE

Two children under 16 can get a free breakfast every day with one paying adult!

### PRETO

Kids up to age 10 eat free all day, every day with paying adults at Preto in Half Terms

### MORRISONS

Spend £4.49 and get one free kids meal all day, every day.

### TESCO CAFES

1 Free Kids meal with every 60p Spend. Available from July 1st Scotland and NI - from July 22nd England & Wales

### GORDON RAMSEY RESTAURANTS

Kids under 8 eat FREE all day, every day at selected Gordon Ramsay restaurants

### YO! SUSHI

From Monday 1st July - Friday 30th August 2024, kids eat free all day Mondays to Fridays at YO! Sushi (min adult spend £10).

### WHITBREAD INNS

Two kids under 16 eat for FREE with every adult breakfast purchased

### BELLA ITALIA

Children eat for £1 with any adult main. The offer is valid 4-6pm Mon to Thurs.

### COCONUT TREE

One child (aged 10 and under) eats free per paying adult. Valid Daily, 12pm - 6pm from Monday 22nd July to Friday 6th Sept 2024.

### DOBBIES GARDEN CENTRES

At Dobbies, for every adult breakfast or lunch purchase, kids eat for FREE. Every Day!

### TABLE TABLE

Two children under 16 can get a free breakfast every day with one paying adult!

### HUNGRY HORSE

Kids eat for £1 on Mondays

### FUTURE INNS

Under 5s eat for free with any adult meal.

Copyright of MONEY SAVING CENTRAL



There's still plenty of opportunities to take part in free activities right here in Lightmoor Village.

## AFC TELFORD UNITED – FOOTBALL

SEE PAGE 2 FOR  
VENUE ADDRESSES

		12NOON-2PM	2.30PM-4.30PM
WEEK 1	Monday 22 July	College	Hollinswood Pavilion
	Tuesday 23 July	St Georges	Donnington
	Wednesday 24 July	Arleston	Lightmoor
	Thursday 25 July	Leegomery	Oakengates 3G
	Friday 26 July	Haygate	Lawley Newdale Park
WEEK 2	Monday 29 July	Sutton Hill	Woodside
	Tuesday 30 July	Brookside	Stirchley
	Wednesday 31 July	Randlay	Malinslee
	Thursday 1 August	Aqueduct	Ketley
	Friday 2 August	2PM-5PM AFC Telford United Kicks 5-a-side Tournament	
WEEK 3	Monday 5 August	College	Hollinswood Pavilion
	Tuesday 6 August	St Georges	Donnington
	Wednesday 7 August	Arleston	Lightmoor
	Thursday 8 August	Leegomery	Oakengates 3G
	Friday 9 August	Haygate	Lawley Newdale Park
WEEK 4	Monday 12 August	Sutton Hill	Woodside
	Tuesday 13 August	Brookside	Stirchley
	Wednesday 14 August	Randlay	Malinslee
	Thursday 15 August	Aqueduct	Ketley
	Friday 16 August	Muxton	Overdale
WEEK 5	Monday 19 August	College	Hollinswood Pavilion
	Tuesday 20 August	St Georges	Donnington
	Wednesday 21 August	Arleston	Lightmoor
	Thursday 22 August	Leegomery	Oakengates 3G
	Friday 23 August	Haygate	Lawley Newdale Park
WEEK 6	Monday 26 August	Bank Holiday	
	Tuesday 27 August	Brookside	Stirchley
	Wednesday 28 August	Randlay	Malinslee
	Thursday 29 August	Aqueduct	Ketley
	Friday 30 August	Muxton	Overdale

### CONTACT

Ian Preece, AFC Telford United Foundation

### INFORMATION

• Ages 8-16

AFC TELFORD UNITED



# SHROPSHIRE CRICKET

TURN TO PAGE 2 FOR  
VENUE ADDRESSES

		10.30AM-12NOON	1PM-2.30PM	2.30PM-4PM
<b>WEEK 1</b>	Tuesday 23 July		Brookside MUGA	Sutton Hill MUGA
<b>WEEK 2</b>	Monday 29 July		Hollinswood Pavilion	
	Tuesday 30 July	Lightmoor MUGA	St Georges MUGA Lawley Newdale Park	
	Wednesday 31 July		Donnington MUGA	
	Thursday 1 August		Malinslee MUGA	
	Friday 2 August		Woodside MUGA	
<b>WEEK 3</b>	Monday 5 August		Brookside MUGA	
	Tuesday 6 August		Sutton Hill MUGA	
<b>WEEK 4</b>	Monday 12 August	Hollinswood Pavilion		
	Wednesday 14 August		Woodside MUGA	
	Friday 16 August		Brookside MUGA	
<b>WEEK 5</b>	Monday 19 August	Lawley Newdale Park Donnington MUGA	St Georges MUGA	
	Tuesday 20 August		Brookside MUGA	
	Wednesday 21 August		Woodside MUGA	
	Friday 23 August	Lightmoor MUGA Hollinswood Pavilion	Malinslee MUGA Randlay MUGA	
<b>WEEK 6</b>	Monday 26 August	Bank Holiday		
	Tuesday 27 August		Brookside MUGA	Sutton Hill MUGA
	Wednesday 28 August	Lawley Newdale Park Hollinswood Pavilion	Woodside MUGA Donnington MUGA	
	Friday 30 August		Brookside MUGA	Sutton Hill MUGA

## CONTACT

Sacha Lee

Tel: 07875 730151

Email: [sacha.lee@shropshirecricketboard.co.uk](mailto:sacha.lee@shropshirecricketboard.co.uk)



## INFORMATION

• Ages 8-16



Coaches from the 4 All Foundation will be leading a diverse range of multi-sports activities at each session, featuring dodgeball, fencing, archery, golf, and even Quidditch! Come and join in the fun!

TURN TO PAGE 2 FOR  
VENUE ADDRESSES

# MULTISPORTS

		12NOON-2PM	2.30PM-4.30PM
WEEK 1	Monday 22 July	Sutton Hill MUGA	Woodside MUGA
	Tuesday 23 July	Stirchley MUGA	Malinslee MUGA
	Wednesday 24 July	Brookside MUGA	Randlay MUGA
	Thursday 25 July	Aqueduct MUGA	Ketley MUGA
	Friday 26 July	Norbroom Park	Shuker Fields

		12NOON-2PM	2.30PM-4.30PM
WEEK 2	Monday 29 July	College MUGA	Hollinswood Pavilion
	Tuesday 30 July	Trench Fields	Telford Town Park MUGA
	Wednesday 31 July	Arleston MUGA	Lightmoor MUGA
	Thursday 1 August	Leegomery MUGA	Oakengates 3G
	Friday 2 August	Donnington MUGA	Lawley Newdale Park MUGA

		12NOON-2PM	2.30PM-4.30PM
WEEK 3	Monday 5 August	Sutton Hill MUGA	Woodside MUGA
	Tuesday 6 August	Stirchley MUGA	Malinslee MUGA
	Wednesday 7 August	Brookside MUGA	Randlay MUGA
	Thursday 8 August	Aqueduct MUGA	Ketley MUGA
	Friday 9 August	Norbroom Park	Shuker Fields

		12NOON-2PM	2.30PM-4.30PM
WEEK 4	Monday 12 August	College MUGA	Hollinswood Pavilion
	Tuesday 13 August	Trench Fields	Telford Town Park MUGA
	Wednesday 14 August	Arleston MUGA	Lightmoor MUGA
	Thursday 15 August	Leegomery MUGA	Oakengates 3G
	Friday 16 August	Donnington MUGA	Lawley Newdale Park MUGA





		12NOON-2PM	2.30PM-4.30PM
<b>WEEK 5</b>	Monday 19 August	<b>Sutton Hill MUGA</b>	<b>Woodside MUGA</b>
	Tuesday 20 August	<b>Stirchley MUGA</b>	<b>Malinslee MUGA</b>
	Wednesday 21 August	<b>Brookside MUGA</b>	<b>Randlay MUGA</b>
	Thursday 22 August	<b>Aqueduct MUGA</b>	<b>Ketley MUGA</b>
	Friday 23 August	<b>Norbroom Park</b>	<b>Shuker Fields</b>

		12NOON-2PM	2.30PM-4.30PM
<b>WEEK 6</b>	Monday 26 August	<b>Bank Holiday</b>	
	Tuesday 27 August	<b>Trench Fields</b>	<b>Telford Town Park MUGA</b>
	Wednesday 28 August	<b>Arlleston MUGA</b>	<b>Lightmoor MUGA</b>
	Thursday 29 August	<b>Leegomery MUGA</b>	<b>Oakengates 3G</b>
	Friday 30 August	<b>Donnington MUGA</b>	<b>Lawley Newdale Park MUGA</b>

## CONTACT

4 All foundation  
Tel: 0800 321 3617  
Email: [info@4all.foundation](mailto:info@4all.foundation)



**4 All**  
FOUNDATION

**NO NEED  
TO BOOK**

## FAMILY TABLE TENNIS

		4PM-6PM
<b>WEEK 1</b>	Wednesday 24 July	<b>Turreff Hall</b> Turreff Avenue, Donnington TF2 8HG
<b>WEEK 3</b>	Wednesday 7 August	
<b>WEEK 5</b>	Wednesday 21 August	

## CONTACT

Turreff Hall  
Tel: 01952 608001  
Email: [events@donningtonmuxtonpc.org](mailto:events@donningtonmuxtonpc.org)

## INFORMATION

• Max 16 players







#RISEAGAIN



Telford & Wrekin  
Cooperative Council

Protect, care and invest  
to create a better borough

No booking needed, just turn up!

# AFC TELFORD UNITED KICKS

YOUTH CLUBS

LOCATION	DAY	TIME	AGE GROUPS
Madeley 3G	Monday	4:30pm – 5:30pm	12+
Stirchley 3G	Thursday	5:00–6:00pm 6:00–7:00pm	Under 12s
Oakengates 3G	Thursday	5:00–6:00pm	12+
Dawley 3G	Friday	5:00–6:00pm	12+
AFC Telford United Goal Zone	Friday	5:00–6:00pm	12+
Lightmoor & Horsehay MUGA	Friday	6:00–7:00pm & 7:00–8:00pm	6–7pm U12 7–8pm 12 to 16
Lawley Primary Academy	Friday	6:30pm – 7:30pm	12+

AFC TELFORD UNITED

FOUNDATION



Safer & Stronger  
Communities





# Wild Telford

With Shropshire Wildlife Trust  
11am-2.30pm

Wild Telford allows your little ones to discover and fall in love with the nature that's right on their doorstep. With help from Shropshire Wildlife Trust, we'll explore nature crafts and wildlife activities like treasure hunts, stick crafts, den building and lots more. Every event will be different, be sure to bring a picnic or snacks and dress for the weather. Sessions run between 11am-2.30pm – join in for some or all of the sessions. Check the [///what3words](#) location for the meeting places.

Date	Location	Activities
Tuesday 6 August	<b>Randlay Valley</b> Starting point/carpark: The Pavilion, Draycott, Hollinswood TF3 2DN <a href="#">///stay.hiked.imported</a>	Sweep netting and pollinator feeders
Thursday 8 August	<b>Squatters Cottage - Lightmoor</b> Parking: Village Centre Car Park, TF4 3TB. On-street parking possible on Stocking Park Road, TF4 3QZ <a href="#">///doing.chromatic.scorch</a>	Den building and treasure hunting
Tuesday 13 August	<b>Apley Woods</b> Meeting point/parking: Peregrine Way Car Park TF1 6TH <a href="#">///flipping.imprints.garages</a>	Stick crafts and environmental art
Thursday 15 August	<b>Cockshutt Nature Reserve and Wrockwardine Wood</b> Starting point: Outside no. 5 Woodlands Drive TF2 6LS Roadside parking around the reserve, <a href="#">///powering.punctured.agenda</a>	Sweep netting and pollinator feeders
Tuesday 20 August	<b>Randlay Valley</b> Starting point/carpark: The Pavilion, Draycott, Hollinswood TF3 2DN	Den building and treasure hunting
Thursday 22 August	<b>Leegomery Community Centre</b> Meeting point/parking: Leegate Avenue TF1 6NA <a href="#">///reckon.improvise.reforming</a>	Stick crafts and environmental art
Tuesday 27 August	<b>Squatters Cottage - Lightmoor</b> Parking: Village Centre Car Park, TF4 3TB. On-street parking possible on Stocking Park Road, TF4 3QZ <a href="#">///doing.chromatic.scorch</a>	Sweep netting and pollinator feeders
Thursday 29 August	<b>Randlay Valley</b> Starting point/carpark: The Pavilion, Draycott, Hollinswood TF3 2DN <a href="#">///stay.hiked.imported</a>	Stick crafts and environmental art

These sessions are being hosted in partnership with the Shropshire Wildlife Trust. They are open to everyone of all ages young and old, children under 12 need to be accompanied by an adult.

**Please bring suitable clothing and refreshments.**

## CONTACT

Kathryn Jones

Email: [kathrynj@shropshirewildlifetrust.org.uk](mailto:kathrynj@shropshirewildlifetrust.org.uk)







## Oak Tree Community Centre

If you are new to Lightmoor Village or have never visited the centre, you may not be aware of the fantastic facilities available to hire at the Oak Tree Community Centre as well as a wide range of events and activities you can take part in.

From birthday parties in the hall, meetings and training rooms or a space for sports, there is a room for all needs.

You can check out the calendar of what's on and view the availability and facilities on our new booking system.

Visit the BVT Lightmoor Village website  
and follow the link at the top of the page

<https://bvtlightmoorvillage.org.uk>

or go straight to,

<https://oak.lemonbooking.com>



# What's on at the Oak Tree Community Centre

Day	Time	Activity	Contact /How to book
Monday	6pm-7pm	Rainbows for girls age 5-7	Visit: <a href="http://www.girlguiding.org.uk">www.girlguiding.org.uk</a> to register
Monday	6pm-8pm	Temple Martial Arts Kickboxing For children, teens & adults	Tel: 07908 849934 Email: <a href="mailto:coachran@templemartialarts.co.uk">coachran@templemartialarts.co.uk</a> Website: <a href="http://www.temple-martialarts.co.uk">www.temple-martialarts.co.uk</a>
Tuesday	5.30pm- 6.30pm	Cheer Unleashed Mystic Cheerleading class Age 5+	Tel: 07447 405007 Email: <a href="mailto:cheerunleashed@gmail.com">cheerunleashed@gmail.com</a> Website: <a href="http://www.cheerunleashed.co.uk">www.cheerunleashed.co.uk</a>
Tuesday	6.30pm- 7.30pm	Cheer Unleashed Enchant Cheerleading Class Age 5+	
Wednesday	5.15pm- 6.45pm	Lightmoor Village Youth Group Juniors year 6-8	Tel Emma: 07710 095798 Email: <a href="mailto:emma.b@sya.org.uk">emma.b@sya.org.uk</a>
Wednesday	7pm- 8.30pm	Lightmoor Village Youth Group Seniors year 9 to age 18	
Thursday	5.30pm- 6.30pm	Kombat Kids Beginners Karate Class	Tel: 07730 899722 Email: <a href="mailto:enquiries@kombatkids.com">enquiries@kombatkids.com</a> Website: <a href="http://www.kombatkids.com">www.kombatkids.com</a>
Thursday	6:30pm- 8pm	Kombat Kids Intermediate Karate Class	
Thursday	6.30pm- 8pm	Brownies For girls age 7-10	Visit: <a href="http://www.girlguiding.org.uk">www.girlguiding.org.uk</a> to register
Friday	6.30pm- 7.30pm	Cheer Unleashed Enchant Cheerleading Class Age 5+	Tel:07447 405007 Email: <a href="mailto:cheerunleashed@gmail.com">cheerunleashed@gmail.com</a> Website: <a href="http://www.cheerunleashed.co.uk">www.cheerunleashed.co.uk</a>
Friday	6pm-7pm 7pm-8pm	FREE Friday Football AFC Telford United Age 6-12 6pm-7pm Age 12-16 7pm-8pm	Multi Use Games Area next to the centre No need to book, just turn up!
Saturday	10am-12pm	Top Hats Stage School Tiny Toppers age 4-5	Tel: 01952 793949 Email: <a href="mailto:midlands@tophatstageschool.co.uk">midlands@tophatstageschool.co.uk</a> Website: <a href="http://www.tophatstageschool.co.uk">www.tophatstageschool.co.uk</a>
Saturday	10am-1pm	Top Hats Stage School Top Hatters age 6-17	
Sunday	8:40am- 12pm	Little Kickers Various classes & times from 18months to 5 years	Tel: 07545 236917 Email: <a href="mailto:westmidlands@littlekickers.co.uk">westmidlands@littlekickers.co.uk</a> Website: <a href="http://www.littlekickers.co.uk">www.littlekickers.co.uk</a>



# Oak Tree Community Centre SPOTLIGHT!

## Top Hats Stage School

Top Hats Stage School providing drama, dancing, music, acting and singing classes for kids every Saturday:

Tiny Toppers (4-5 years) 10:00-12:00

Top Hatters (6-17 years) 10:00-13:00

Mor details available from

<https://tophatstageschool.co.uk/locations/telford/>



# Lightmoor Village Youth Project



For more info please contact Emma Brown:  
07710 095798 emma.b@sya.org.uk  
Facebook: @LightmoorVillageYouthProject

The Lightmoor Village Youth Clubs take place through a partnership with BVT and Shropshire Youth Association.

As well as the youth clubs that take place on a Wednesday evening, there is a youth forum, 'Speak Up, Speak Out' and regular outreach work taking place in the Village.

**We are always looking for volunteers, if you are interested please get in touch by email:  
[emma.b@sya.org.uk](mailto:emma.b@sya.org.uk)**



For more info please contact Emma Brown:  
07710 095798 emma.b@sya.org.uk  
Facebook: @LightmoorVillageYouthProject



## Friday night football

In partnership with BVT, AFC Telford United foundation, Cllr Raj Mehta and Cllr Ian Preece, Friday night football will continue to take place weekly through March-October.

Qualified coaches from AFC Telford United are at the Multi-Use Games Area in Woodlands Park to help young people learn new and improve their skills.



**Under 12 6pm-7pm, 12-16 7pm-8pm.**  
**No need to book, just turn up!**

## Community Speed Watch

Are you concerned about speeding vehicles in the community? You are welcome to join the local Horsehay and Lightmoor Speed Watch group.

Let us know if you would like to volunteer.

**Email: [events@bvt.org.uk](mailto:events@bvt.org.uk)**



## Community Book Shop

Did you know the Oak Tree Community Centre have a book swap shop?

Located in the corridor you can help yourself to books or bring your own to swap.

There are books of all types and for all ages. Why not come and take a look for yourself!



# Lightmoor Village businesses

## Bournville Bistro

The bistro is located inside Bournville House and is open Monday to Friday from 8.30am-1.45pm.



### Breakfast Menu

#### Hot Drinks

Standard Tea or Coffee	£1.00
All Bean to Cup Machine Drinks	£2.20
Hot Chocolate	£2.20

#### Cold Drinks

Cans of Pop	£1.00/£1.20
Bottle of Water	£1.00
Fruit Juice	£1.00

Meals can be eaten in or taken away. Pre-order by calling 0121-667-1023 or message the Facebook page.



### Breakfast Menu

Mon-Fri 8.30am-12 noon)

#### Small Bistro Breakfast £5.50

1 sausage, 1 bacon, Fried Egg, Tomato, Mushrooms, Baked Beans & Toast with standard cup of tea or coffee

#### Big Bistro Breakfast £7.00

2 sausage, 2 bacon, 2 Fried Egg, Tomato, Mushrooms, Baked Beans & 2 Toast with standard cup of tea or coffee

#### Vegan Bistro Breakfast £4.50 (ve) (10 minute wait)

2 Vegan sausage, Mushrooms, Tomato, Baked Beans & Toast (add an egg for vegetarian option) £5.30  
with standard cup of tea or coffee



### Breakfast Menu

Mon-Fri 8.30am-12 noon)

Fried Egg Sandwich	£3.00
Beans on Toast	£2.50
Bacon or Sausage Sandwich	£3.00
Tomatoes on Toast	£2.50
Vegan Sausage Sandwich (ve)	£3.00
Fried Egg on Toast	£3.00
Toast & Preserves	£1.90
Cheese on Toast	£3.00
Scrambled Egg on Toast	£3.00
Cereals	£1.50
Toast/Bread & Butter (per slice)	£0.50
2 Crumpets & Butter	£1.50

#### Optional Extras (each)

Sausage/Bacon/Egg	£0.80
Mushroom/Tomato/Beans	£0.50



# Lightmoor Village businesses

## Bournville Bistro

As well as the daily lunch menu there is always a daily special that changes each week.

Roast dinner Wednesdays are very popular as well as Shelley's fresh omelettes! You can eat in or take away and preorders are welcome.

**Please call 0121 667 1023 or visit the Bournville Bistro Facebook page.**



## Lunch Menu

Mon-Fri 12 noon - 1.45pm

### Other Items

Double Egg & Chips £3.50  
Double Ham, Egg & Chips £5.50 Portion of Chips £1.50  
Crisps £0.80

### Puddings £3.50 each

Apple Crumble  
Apple Pie  
Jam Sponge  
Syrup Sponge  
Spotted Dick  
Sticky Toffee Pudding  
Salted Caramel Sticky Toffee Pudding

Served with Custard or Ice Cream

Ice Cream per scoop £0.75  
Flake £0.25

Meals can be eaten in or taken away. Pre-order by calling 0121-667-1023 or message the Facebook page.



## Lunch Menu

Mon-Fri 12 noon - 1.45pm

### Cold Sandwiches

Ham	£3.50	Egg Mayo	£3.00
BLT	£4.00	Cheese	£3.00
Ham & Cheese	£4.00	Tuna Mayo	£4.00
(upgrade to baguette + 80p)			

### Panini's (served with salad)

Ham	£4.50	Cheese & Tomato	£4.45
Cheese	£4.00	Bacon & Cheese	£4.90
Ham & Cheese	£4.90	Tuna Melt	£5.40

### Jacket Potatoes

Cheese/Beans	£4.25	Cheese & Beans	£4.75
Coleslaw	£4.50	Tuna Mayo	£4.75

### Omelettes

Plain Omelette	£3.50	Cheese Omelette	£4.00
Cheese & Mushroom	£4.50	Cheese & Onion	£4.25
Add Ham for an extra	£1.00		

## Weekly Menu example

*Monday*

Steak pie, mash, peas, gravy

*Tuesday*

Cottage pie, house salad, crusty bread and butter

*Wednesday*

Roast chicken dinner, roast potatoes, stuffing, mixed veg Yorkshire pudding, gravy

*Thursday*

Chilli con cami, rice, sour cream, garlic bread

*Friday*

Battered fish, scampi or fish cakes, chips, mushy peas or House salad, crusty bread and butter



## Lightmoor Village businesses

### Londis

Our local store has some great offers available and sells a wide range of products.

They are open every day from 6am-10pm.

**Visit the Londis Lightmoor Facebook page to see their latest offers.**



### ABC Nursery

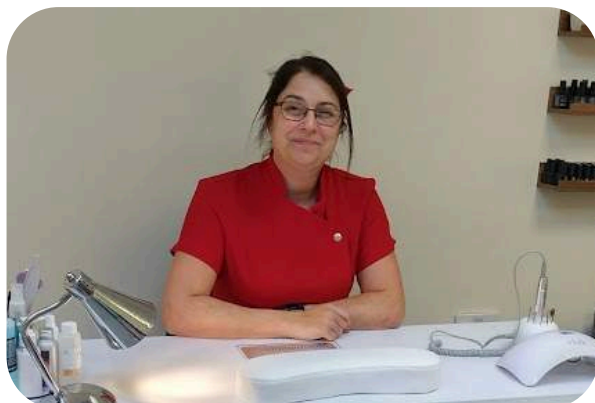
ABC nursery is based right in the heart of Lightmoor Village and has been rated Outstanding by Ofsted since it opened in 2012. ABC Lightmoor offers a warm, friendly and caring atmosphere for the children.

**Call 01952 502572**

### Hortons Hair Salon

Situated in Lightmoor Village inside Bournville House Hortons Hair Salon is open to the Village.

**Call Deb on 07530 674506 to book your appointment or find her on Facebook**



### Steps Nail Shack

Steps nail salon is in the heart of Lightmoor Village.

A personal, warm and comfortable salon in Bournville House, available to all.

**Call 07548 928957 to book an appointment or find her on Facebook**



## Community Support

The Oak Tree Community Centre is a donation and collection point for Telford Crisis Support.

You can bring any of the donations on the wish list to the centre and we will pass them on.

If you or someone you know is in crisis and requires support with food, baby and toddler essentials or school wear please contact Telford Crisis Support

**Tel: 01952 586 646**

**email: [admin@telfordcrisissupport.org.uk](mailto:admin@telfordcrisissupport.org.uk)**

**or look on the website**

**[telfordcrisissupport.org.uk](http://telfordcrisissupport.org.uk)**



**In emergencies or out of hours contact  
Telford Interfaith Council on  
[hello@interfaithtelford.org](mailto:hello@interfaithtelford.org)**

### TELFORD CRISIS SUPPORT



#### Shopping list

We are always grateful to receive the following

**Tinned meats - steak, mince, pork, chicken, corned beef etc**

**Tinned meals - stew, meatballs, curry, chilli etc.**

**Tinned veg - potatoes, peas, carrots etc.**

**Long-life Milk - semi-skimmed & whole**

**Pasta sauces & pasta bakes**

**Rice pudding & tinned fruit**

**Tinned tuna & salmon**

**Pasta & noodle pots**

**Chocolate**

**Biscuits**

**Coffee**

**Sugar**



We also welcome  
any dietary-specific  
foods, vegetarian,  
gluten-free,  
free-from etc.



**Shampoo  
Toothpaste  
Deodorant**

**Toothbrushes  
Shaving Foam**

**Disposable razors  
Shower Gel & Soap**

**Feminine Care Products**



### Cost of living support

Telford & Wrekin Council offer free cost of living advice and support.

This includes;

- Benefit payments and finances
- Mental health and wellbeing
- Bills and affordable warmth
- Food, toiletries and clothing
- Support for businesses

**For more information take a look at their website  
[https://www.telford.gov.uk/info/21826/cost\\_of\\_living](https://www.telford.gov.uk/info/21826/cost_of_living)**

Citizens Advice Telford & Wrekin offer free cost of living, information signposting and advice in communities across Telford.

An advisor visits the Oak Tree Community Centre on the 1st Tuesday of each month from 9.30am-12.30pm.

**To book an appointment please call 01952 567193 or  
visit the website to fill in an initial enquiry form.  
[citizensadvice.telfordandthewrekin.org.uk](http://citizensadvice.telfordandthewrekin.org.uk)**



## Community Support

### Telford Autism Hub

**Telford & Wrekin CVS manage two autism hubs, one for adults and one for children.**

#### Adults

Telford Adult's Autism Hubs main aim is to enable individuals to better understand their autistic identity.

This can be an individual seeking an assessment or general support. It can also be other agencies and businesses wanting to be better placed to meet the needs of Telford's neurodiverse community.

#### Children

Our Children's Autism Hub is available to children and young people aged 0-18, and their families, who have a formal diagnosis of Autism. For individuals that have other needs, for example, a learning disability, the Autism Hub will provide support in respect of their Autism.

**For more information please email; [admin@telfordautismhub.org.uk](mailto:admin@telfordautismhub.org.uk)  
call 01952 916109 or visit the website [www.telfordautismhub.org.uk](http://www.telfordautismhub.org.uk)**



**TELFORD CHILDREN'S AUTISM HUB**

*Come and join us for a*  
**Coffee & Chat**

*"Really nice to share experiences with other parents. Also, to receive support and encouragement from staff and parents"*

**Every Monday  
11.15am to  
12.15pm  
(Term Time Only)**

*"Attended the coffee & chat. Made to feel welcome, a warm atmosphere and nice just to talk to other parents that 'get it' -"*

Email us on [childrensautism@tandwcv.org.uk](mailto:childrensautism@tandwcv.org.uk) or call 01952 262063 if you would like to attend.



**TELFORD CHILDREN'S AUTISM HUB**

**FAMILY FUN SESSION**

**3RD TUESDAY OF THE MONTH  
4PM TO 5PM TERM TIME ONLY**

COME AND JOIN US FOR OUR FAMILY FUN SESSION FOR PRIMARY AGED CHILDREN  
If you would like to attend Email our team at [childrensautism@tandwcv.org.uk](mailto:childrensautism@tandwcv.org.uk)

A project of Telford & Wrekin CVS



At The National College, our WakeUpWednesday guides empower and equip parents, carers and educators with the confidence and practical skills to be able to have informed and age-appropriate conversations with children about online safety, mental health and wellbeing, and climate change. Formerly delivered by National Online Safety, these guides now address wider topics and themes. For further guides, hints and tips, please visit [nationalcollege.com](https://nationalcollege.com).

## What Parents & Educators Need to Know about POP-UP ADS

### WHAT ARE THE RISKS?

Pop-up advertisements have been a staple of the internet since they were first introduced in the late 1990s. This form of advertising causes a small window or banner to appear in the foreground while someone is browsing a website. Although these adverts are merely irritating for most people, pop-ups can present more severe risks to younger users.

#### DECEPTIVE TACTICS

Children sometimes don't understand that adverts (including pop-ups) are designed to sell a product – and can't distinguish between a legitimate feature of a site and an advertisement. Video games, for example, can be full of pop-up ads that tempt users into spending money, yet they might take the form of a mini-game or extra level.

#### INAPPROPRIATE CONTENT

While some adverts are targeted based on a user's interests and activity online, that isn't always the case. This means that children may unfortunately be exposed to ads for age-inappropriate goods or services such as tobacco products, alcohol and gambling sites.

#### MALWARE RISK

Most pop-ups from reputable advertisers are safe. However, in some cases, pop-ups can trick you into downloading malware – whereby cybercriminals install software on your device, allowing them to access your sensitive data. It can be difficult to know if malware has been installed on your device, so your best option is to avoid engaging with these pop-ups altogether. Be wary of sites that suddenly bombard you with ads or try to prevent you from leaving.

#### PRIVACY RISK

Many app and game developers will collect their users' personal data, such as their name, address, email address, geo-location information, unique numerical identifiers, phone and payment information. If a child clicks on an illegitimate pop-up loaded with malware, all this information could be put at risk.

#### RACKING UP BILLS

If a child has access to a payment card on their device – be it a smartphone, laptop, or tablet – they could very quickly rack up a massive bill by interacting with pop-up adverts and buying products shown to them. Try to keep a close eye on their spending.

#### BEHAVIOURAL IMPACT

Research has found that pop-up ads can even have an impact on children's behaviour. Some of these adverts use manipulative tactics that take advantage of children's developmental vulnerabilities, instant gratification or otherwise. This approach may cause a child's mood to shift, becoming more stubborn, for example, if they begin wanting their parents to buy a specific product for them.

### Advice for Parents & Educators

#### START A CONVERSATION

It's important to have regular conversations with children about online advertising so that they understand the risks of interacting with pop-ups. For example, if a child asks for a product which has been advertised to them online, ask them why they want it and how they found it. This will present an opportunity to talk youngsters through the tactics used in online marketing.

#### SPOT THE SIGNS

If you're concerned that a child may be following pop-up ads to make online purchases or viewing content that could be harmful, it's important to be able to spot the signs. Due to the often-manipulative nature of these adverts, children who interact with them regularly may show signs of distraction, stubbornness and an increasingly materialistic worldview.

#### MONITOR CONTENT

It can often be difficult to spot when a pop-up advert is malicious – even more so for impressionable younger users. It's important to monitor the content they're consuming to prevent them from clicking on something dangerous. If a pop-up ad seems too good to be true – promising a free iPad, for example – it probably is.

#### PRIVACY SETTINGS

Most modern devices have privacy settings that let you limit the amount of advertising a child is subjected to while using apps or browsing the internet. You may also want to speak to teachers about checking sites and apps with advertising, as well as adjusting digital privacy settings on any education technology they use.

#### LIMIT SPENDING

Try to stay aware of what children are spending and ensure that payment details aren't linked to or saved on the gaming platform that they use. Most video games and internet-enabled devices have settings that can help you manage what children can or cannot purchase online.

#### CUT DOWN ON SCREEN TIME

Given the prevalence of pop-up ads (which can appear on everything from smartphones and tablets to internet-connected toys and games), it might be beneficial to limit the time children spend on digital devices to curb their exposure to digital advertising.

### Meet Our Expert

Carly Page is an experienced technology writer with more than 10 years in the industry. Previously the editor of TechSolid the Inquiry, she is now a freelance technology journalist, editor and consultant who writes for Forbes, TechRadar and Wired, among others.

Source: See full reference list on guide page at <https://nationalcollege.com/guides/pop-up-ads>

**#WakeUpWednesday** The National College

Users of this guide do so at their own discretion. No liability is entered into. Current as of the date of release: 28.06.2024



## Support for people 50+

**Forum 50+ is a small charity supporting people over 50 in the Telford & Wrekin area, helping them to maintain wellbeing and independence through increased access to information, support, activities and opportunities to build new connections and engage in social activity within their communities.**



### Our Aims:

- Tackle loneliness, and isolation, helping people to build connections and resilience and to feel better supported.
- Provide information to local people about services, support, advice, activities, volunteering, current issues and consultation opportunities.
- Help people to participate in regular activities increasing social interaction, well-being and confidence.
- Promote the needs and concerns of older people so that they may be heard and accounted for in the planning of services and facilities, and address inequality.
- Provide opportunities for people to learn and gain confidence in the use of technology.
- Offer opportunities for volunteering.

### What we offer:

- Befriending services including our Telephone Chat Scheme and face to face befriending.
- Regular social groups.
- Weekly exercise classes.
- Computer support and tuition.
- A range of volunteering roles and opportunities to get involved.
- Free membership and regular newsletters.
- Helping you to have a say.
- Campaigning through our action groups.

**For more information, please call  
07932 828333 or 07552 975676  
Alternatively visit our website  
[www.forum50plus.org.uk](http://www.forum50plus.org.uk)**



## Action for Happiness

The mission of Action for Happiness is to help people create a happier world, with a culture that prioritises happiness and kindness.

You can sign up to their monthly calendars that have a different theme each month. [www.actionforhappiness.org](http://www.actionforhappiness.org)



## Armed Forces Network

The Armed Forces network meet on the 2nd Thursday of the month at The Grazing Cow in Lawley.

Lightmoor Village residents are very welcome to join.

Please email;  
[LawleyStewardship@bvt.org.uk](mailto:LawleyStewardship@bvt.org.uk)  
if you would like to know more.

## Your Parish Councils and Councillors

Lightmoor Village is represented by two Parish Councils, with Woodlands Lane being the boundary.

The west side of the Village is The Gorge Parish Council and east side is Dawley Hamlets Parish Council.



### The Gorge Parish Council

If you wish to contact the parish council, you can do so by contacting the clerk by telephone or email.

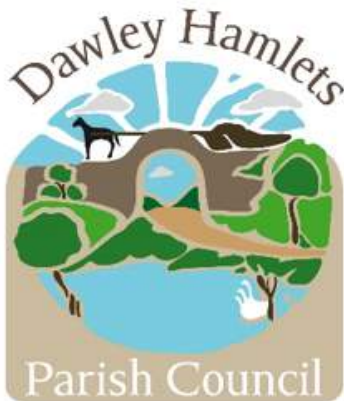
Tel: 01952 883192

Email: [clerk@thegorgeparishcouncil.gov.uk](mailto:clerk@thegorgeparishcouncil.gov.uk)

Cllr Alan Taylor is the Councillor for the Lightmoor Ward and is also The Parish Council Chair. He attends the Lightmoor Village Delivery Group and Lightmoor Village Estate Management Committee to bring The Gorge and Lightmoor Village together.



There is a vacancy for the Lightmoor Ward, Lightmoor Village residents are invited to join the parish as a local councillor, please contact them for more information.



If you wish to contact the parish council, you can do so by contacting the clerk by telephone or email.

Tel: 07941 212311

Email: [clerk@dawley-hamlets.org](mailto:clerk@dawley-hamlets.org)

Cllr Zona Harrington, Cllr Raj Mehta and Cllr Ian Preece are Parish Councillors for the Horsehay Ward that Lightmoor Village is part of.

Cllr Kate Barnes attends the Lightmoor Village Delivery Group and Cllr Mehta attends the Lightmoor Village Estate Management Committee.



**Cllr Zona Harrington**



**Cllr Raj Mehta**



**Cllr Ian Preece**



**Cllr Kate Barnes**



# Telford & Wrekin Council Borough Councillors



Telford & Wrekin  
Co-operative Council

Protect, care and invest  
to create a better borough

The Borough of Telford & Wrekin Council is divided into 32 wards and 54 Councillors or Members. Some wards have a single Councillor, others have two or three. Councillors are elected to represent all the residents in their ward.

Local Councillors are elected by the community to decide how the council should carry out its various activities. They represent public interest as well as individuals living within the ward in which he or she has been elected to serve a term of office.

They have regular contact with the general public through council meetings, telephone calls or surgeries.

Lightmoor Village is part of the Horsehay and Lightmoor Ward. Our Borough Councillors are:



**Cllr Raj Mehta**



**Cllr Ian Preece**

**Cllr Raj Mehta**  
[rajash.mehta@telford.gov.uk](mailto:rajash.mehta@telford.gov.uk)

**Cllr Ian Preece**  
[ian.preece@telford.gov.uk](mailto:ian.preece@telford.gov.uk)

If you have something you'd like to share with the Lightmoor Village community in September, please let us know.

You can pop into the Oak Tree Community Centre or email us at:

[events@bvt.org.uk](mailto:events@bvt.org.uk)

